

FINNLEDEN VÄSTRA 15 KM



Difficulty: moderate

Marking: orange

Recommended footwear: boots

Terrain: carriage roads, tarn, mires, views, coniferous forest, cultural history, access roads.

Updated: 2025-02-21

Summary

In Mangskog there are many paths of Finn tradition. Two of them are orange marked hiking trails, Finnleden Västra and Finnleden Östra that meet up north in Bjurbäcken and run parallel for a bit. Finnleden Västra is a circular trail of 15 km with parking space and start at Storperstorpet, west of the Tobyn junction.

The area is characterized by wilderness spirit and beautiful nature. The area has traditions of Finn culture and historical forestry. The trail passes some Finn crofts and cultural historic remains. The terrain is partly hilly and the surface varies between carriage roads, forest paths, logging roads and gravel roads. Active forestry is conducted along all our trails and you will now and then pass by cutting areas in different states of regrowth.

A map for download is available as a separate PDF. Mobile coverage is lacking in some areas.

Suggested starting point

Parking space at Storperstorpet, WGS84 59,7824423° N, 12,7995317° E. Car access from the Tobyn junction, where you go 1,6 km west (sign says Röstorp). Where the road splits you take the left one.

Alternative starting points

The parking area by the local heritage center Neragata in Slobyn or via Porna, see below.

Description clockwise from Storperstorpet

Storperstorpet– Fågeltjärnet 3 km

From the parking space, the circular trail starts west on a path which meets the Slobyn access trail after 600 m. The circular trail heads north and passes the mire Slobymossen. The mire has its outlet in the tarn Fågeltjärnet about 500 m north. A small stone bridge across a creek indicates that you are approaching the tarn.

Fågeltjärnet - Röstorp 1,5 km

The trails goes along the tarn on soft, needle covered ground. A section of duck-boards takes you across a wet area. A carriage road is followed by a logging road before you reach the remains of Tjärnstorpet. It was inhabited until 1896.

After a small hill, duck-boards take you cross a tiny creek. There is a cutting area as you climb uphill past the old farm Röstorp.



The mire Slobymossen.



Stone bridge at Fågeltjärnet.



Pine needle covered path at Fågeltjärnet.

FINNLEDEN VÄSTRA 15 KM



Difficulty: moderate

Marking: orange

Recommended footwear: boots

Terrain: carriage roads, tarn, mires, views, coniferous forest, cultural history, access roads.

Updated: 2025-02-21

It was probably the last farm in Värmland to keep free roaming cattle in the forest till 1987. Just below the houses you take off north and up the hill on a carriage road next to a deep ravine. You get a good view of the surroundings from around 300 masl.

Röstorp - Porna 1,9 km

The carriage road continues north. After one kilometer you pass the remains of the croft Pilterud. The terrain turns drier, allowing more heather and pine. After crossing a logging road the trail goes through a cutting area. When you reach a stone wall the trail goes east. If you want to see the Porna Finn croft you take a detour of 100 m north on the Porna access trail. **Please note that there are several old orange marks around the Porna croft, so make sure to go back to the stone wall to continue on the circular trail.**

Porna - the eastern path split 2,7 km

East along the stone wall, the trail follows a carriage road to the mire Pornamossen, first through spruces then pines and heather. When arriving at a logging road you follow it to the north east for 500 m. At yet another logging road, you cross it and enter the path to the Nytorp croft ruin, where there is a roofed bench table. The Finnleden Östra connects here and the both trails run parallel for 1,4 km. **(Please note that Finnleden Östra takes off north at Nytorp, so pay attention to the signs!)**

On your way east you climb the hill Fågelkullen, the highest point of the trail (315 masl). With a short detour of 100 m north you see the remains of a croft with surrounding stone walls. (WGS84: 59.8225236° N, 12.8172583° E).

👉 More details about the remains available in Swedish at Fornsök: <https://app.raa.se/open/fornsok/>

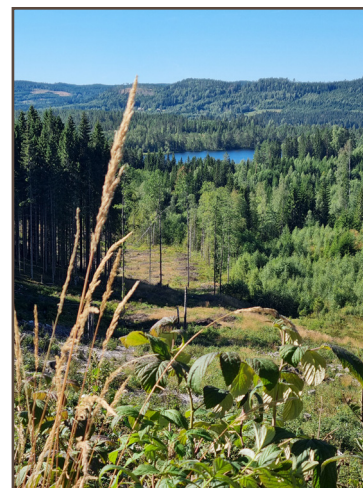
Another southeast bend takes you to the logging road where the two trails split again. Here is a bench table.

The eastern path split - Tobyn 5,5 km

Finnleden Östra takes off on a logging road, but you follow Finnleden Västra straight south on a forest carriage road. Further south there are some stages on logging roads.

Tobyn - Storperstorpet 1,6 km

From the Tobyn junction you go west on the gravel road. There might be some local traffic. Where the road splits you take a left and reach the parking at Storperstorpet.



View from northwest of Röstorp.



Stone wall south of Porna.



Croft remains at Fågelkullen, 100 m north of the trail.

FINNLEDEN VÄSTRA 15 KM



Difficulty: moderate

Marking: orange

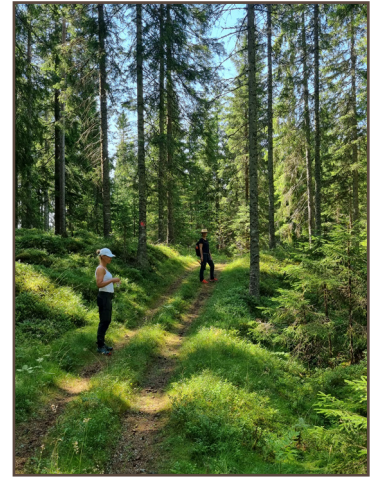
Recommended footwear: boots

Terrain: carriage roads, tarn, mires, views, coniferous forest, cultural history, access roads.

Updated: 2025-02-21

Elevation profile for Finnleden Västra

The profile shows the circular trail from the start/parking at Storperstorpet clockwise. An interactive map, where you can see the altitude of different places, is available at www.naturkartan.se. Enlarge the view by clicking the green framed symbol to the right. Click the circled symbol. Move the cursor across the profile to see the corresponding position on the map.

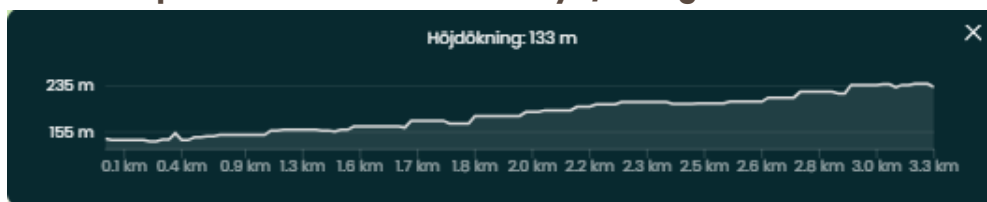


Carriage road south to Tobyn.

Access trail Slobyn/Neragata

Park at the local heritage center Neragata in Slobyn (WGS84: 59.753906° N, 12.799520° E) and walk 3,6 km to the circular trail. The first kilometer goes along an asphalt road (north) without marks. A sign post with orange arrows indicates where to take off. Then follow the gravel road 900 m and take the carriage road through the forest. From there the distance to the circular trail is 1,7 km.

Elevation profile for access trail Slobyn/Neragata



Carriage road south to Tobyn.

Access trail Porna

If you would like to make your own circular trail (about 17 km) starting in Slobyn you can take the hiking trail to Porna and go back via the gravel road along the beautiful lake Stora Salungen. However there are no marks or signs after the Porna access trail, so bring a map.

Elevation profile for access trail Porna

